



EMERALD PARADISE



TOROSLAR
CONSTRUCTION & INVESTMENT

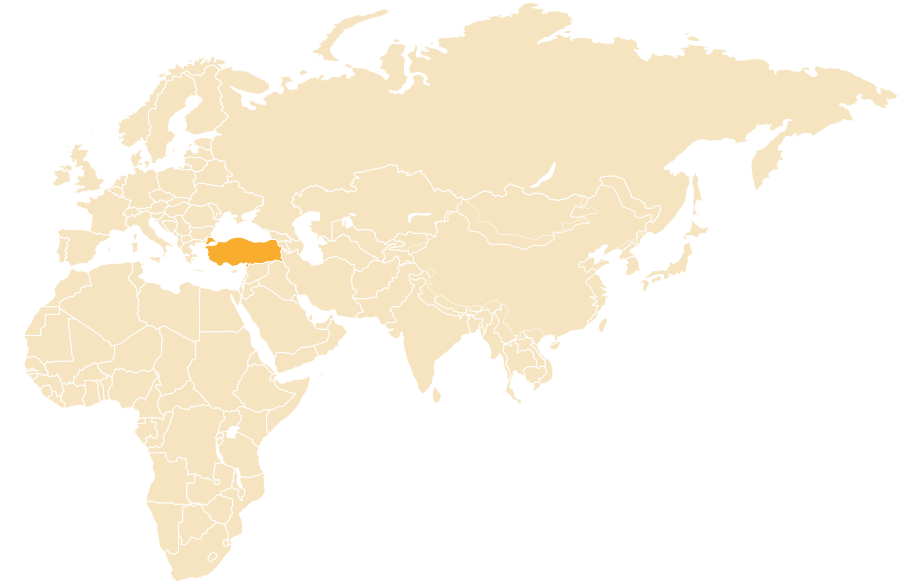
Welcome to Emerald Paradise

We are bringing our latest project to life, in which there are a variety of social facilities for you and your family to enjoy; which has a unique architecture and where quality, elegance and the magnificent views of the sea and surrounding countryside are prevalent, and where you will find tranquillity in the peace of EMERALD PARADISE.

36°37'30.6"N 31°46'58.8"E



Emerald Paradise, which is our 5th Emerald project, is located in the Avsallar region of Alanya. Avsallar is the fastest developing region of both Alanya and Antalya. Our project is located on the foothills of the Taurus Mountains and is only 1.2 km from the famous Fuğla and Incekum beaches. Avsallar town centre is just 800 metres away and here you will find amenities such as shopping centres, restaurants, health care facilities and schools. The largest local market, the Avsallar Wednesday market, where you can find locally grown fresh fruit and vegetables as well as local organic produce is only a short 5 minute walk away.





We are building a new world...

As Toroslar Construction we have achieved great success with the 4 Emerald projects we have completed, Emerald Park, Emerald Towers, Emerald Dreams and Emerald Riverside. Our projects have been admired for their locations, designs and high quality. We aim to continue this success with our Emerald Paradise project.

Our Emerald Paradise project will be built on an area of 13.000 m2 and will consist of 4 blocks with a total of 234 apartments. There will be 144 one bedroom apartments, 64 2 bedroom apartments and 26 two, three, or four bedroom pent-house apartments.





Feel special...

When we were designing the project our priority was that residents live in our Emerald Paradise comfortably and peacefully, to ensure this we have included a variety of social facilities. These include a large swimming pool with water slides, a cinema, a restaurant and a fully equipped gym. There is also a tennis court, a children's playground as well as a games and entertainment centre with billiards, table tennis and a kids

club. Lastly a 5 star Spa centre will be available so you can truly relax and get away from the stress of daily life. The spa centre will contain a Turkish bath, sauna, steam room, massage rooms and a heated indoor swimming pool.

With our Emerald Paradise project we are presenting you with the opportunity to enjoy the luxuries of a 5 star hotel in the comfort of your own home.





RUN

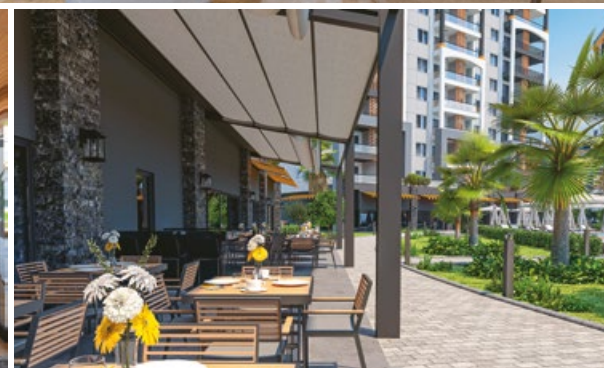
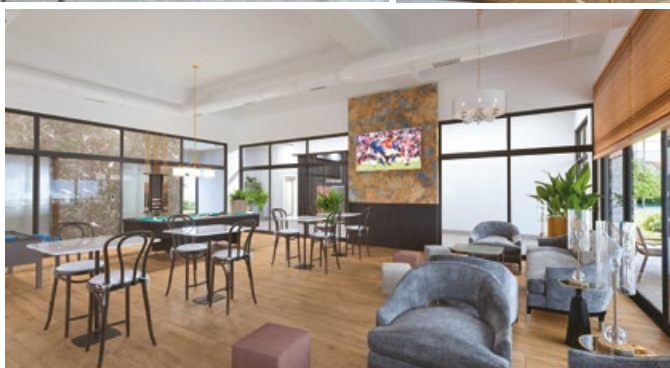
DOZ

An investment in your life beyond limitations.....

Would you like to live your daily life with all the comforts of a 5 star hotel? We have thought of every amenity you could need and included them within our project. We are presenting with the opportunity to own your dream home with our Emerald Paradise complex that has been designed with thought given to the smallest detail and that will be constructed with the same care and attention. Your fa-

mily will be able to live in peace and comfort while fully enjoying the sun, sea and sand.

Do not miss this opportunity to make an investment in your future and your life. You can earn a large return on your investment in this area where the value of property is constantly increasing and there is a high rental demand.





Luxury living...

General

- Central TV-Satellite System
- Lifts
- Air pressured water
- Electricity generator
- Double Glazed PVC Windows
- Spot Light in Living Rooms and Kitchens
- Solid steel entrance door
- American style internal doors
- Heat Resistant walls
- Recessed Spot lights
- Featured coving and skirting
- Ceramic flooring in all rooms
- Air conditioning units in each room

Kitchen

- Custom designed furniture
- Granite worktop
- Ceramic floor tiles

Bathroom

- Ceramic floor and wall tiles
- Shower cabin

Balcony

- Well-proportioned balconies with Aluminium and glass handrails
- Ceramic flooring and external lighting





Family living...

Leisure Facilities:

- Swimming pool & Children's pool
- Children's playground
- Separate waterpark and waterslides
- Turkish Bath
- Massage Room
- Sauna
- Fitness centre
- Heated indoor swimming pool
- Steam Room
- Tennis Court
- Billiards and Table Tennis
- Kids Club
- Play Station Game and Tv Screen
- Power Generator for possible Power Cuts
- BBQ Areas with Pergolas
- Wireless Internet in Common Areas
- Restaurant
- General Storage
- Cinema

Parking

- Indoor Car Park
- On-site Car Park

Security & Safety

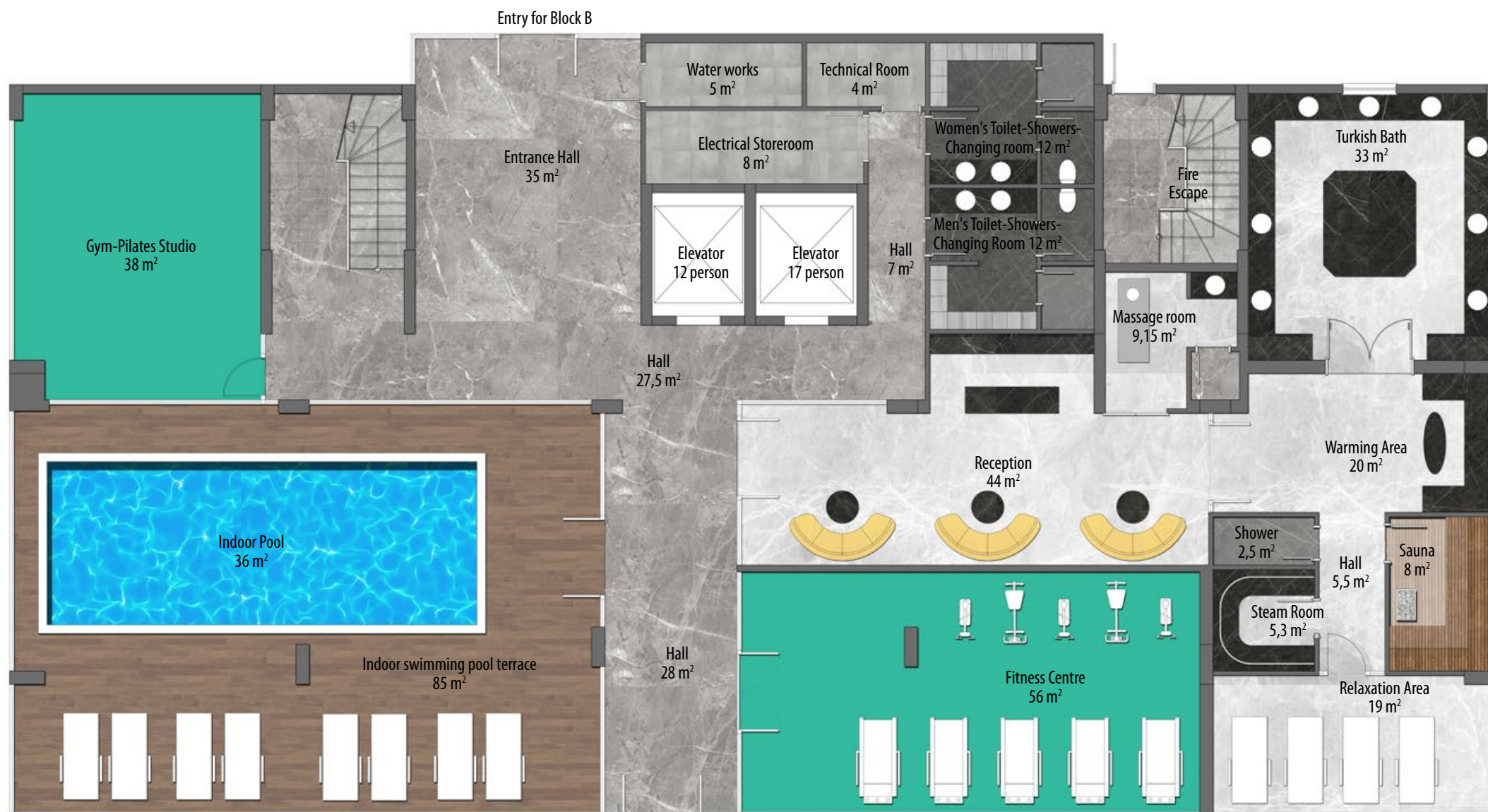
- Audio-visual Door Phone
- Separate flat for doorman
- 24/7 Security in the complex
- Gardeners and Caretakers







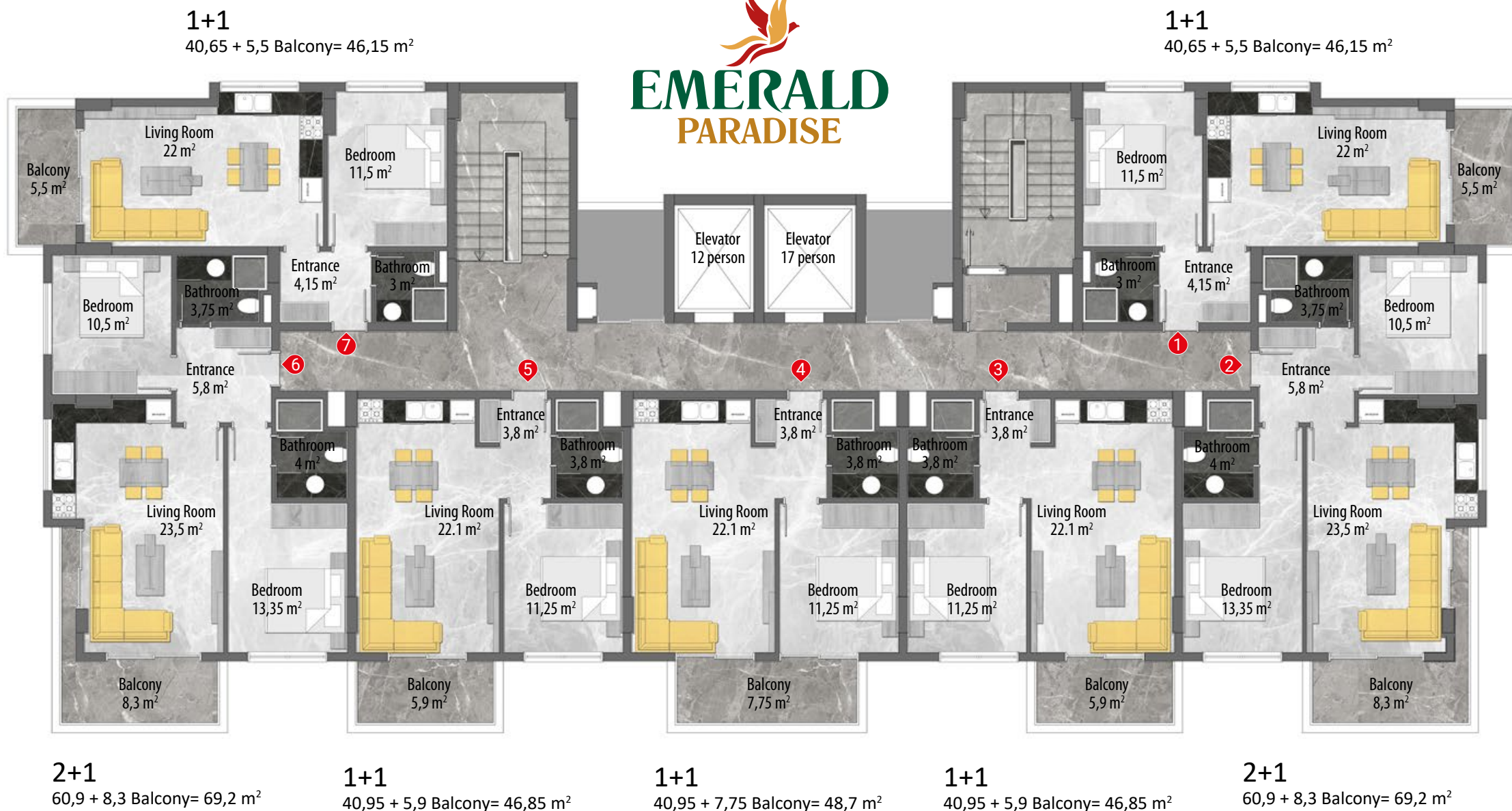

EMERALD
PARADISE



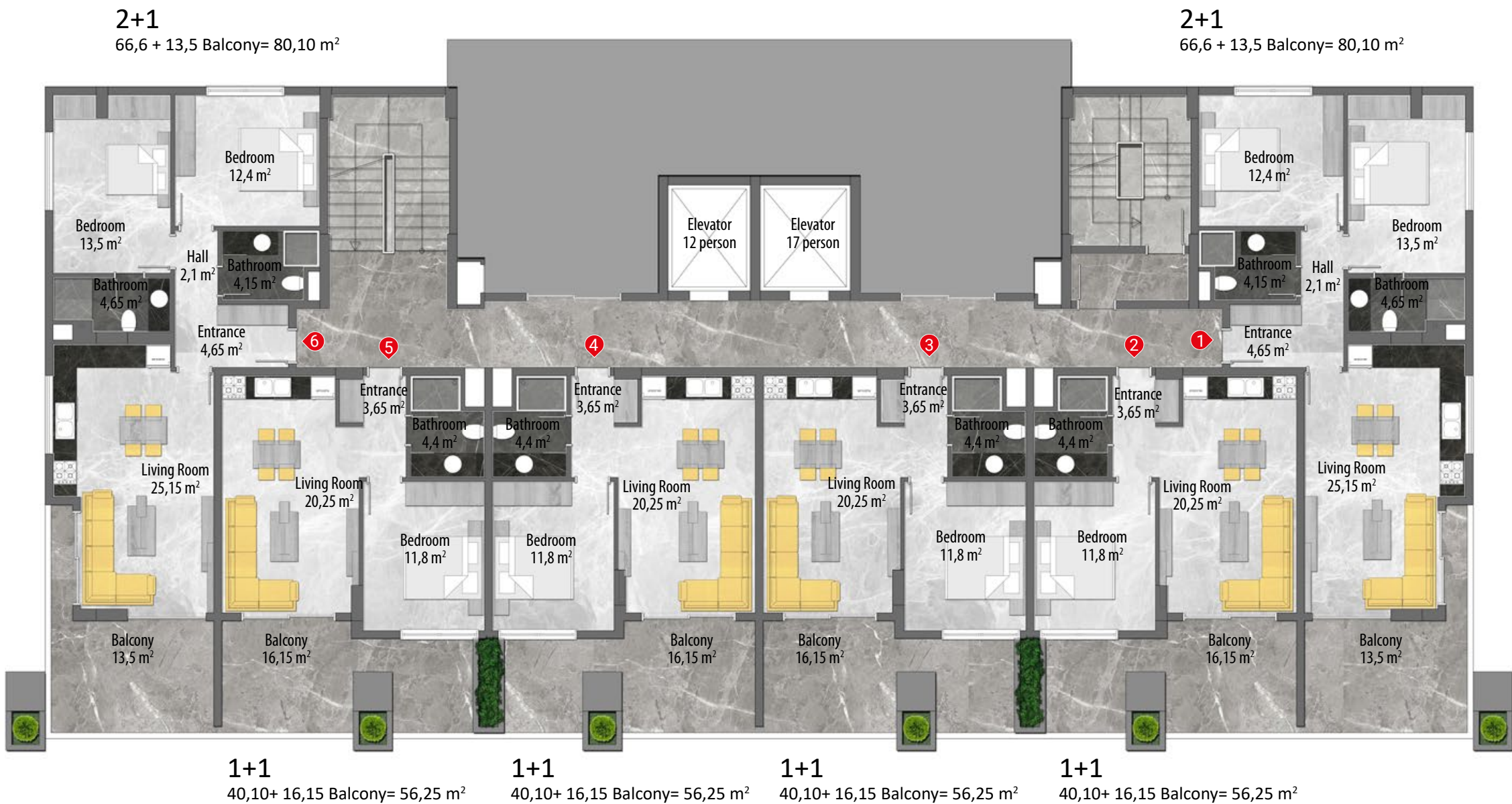
B BLOCK GROUND FLOOR PLAN



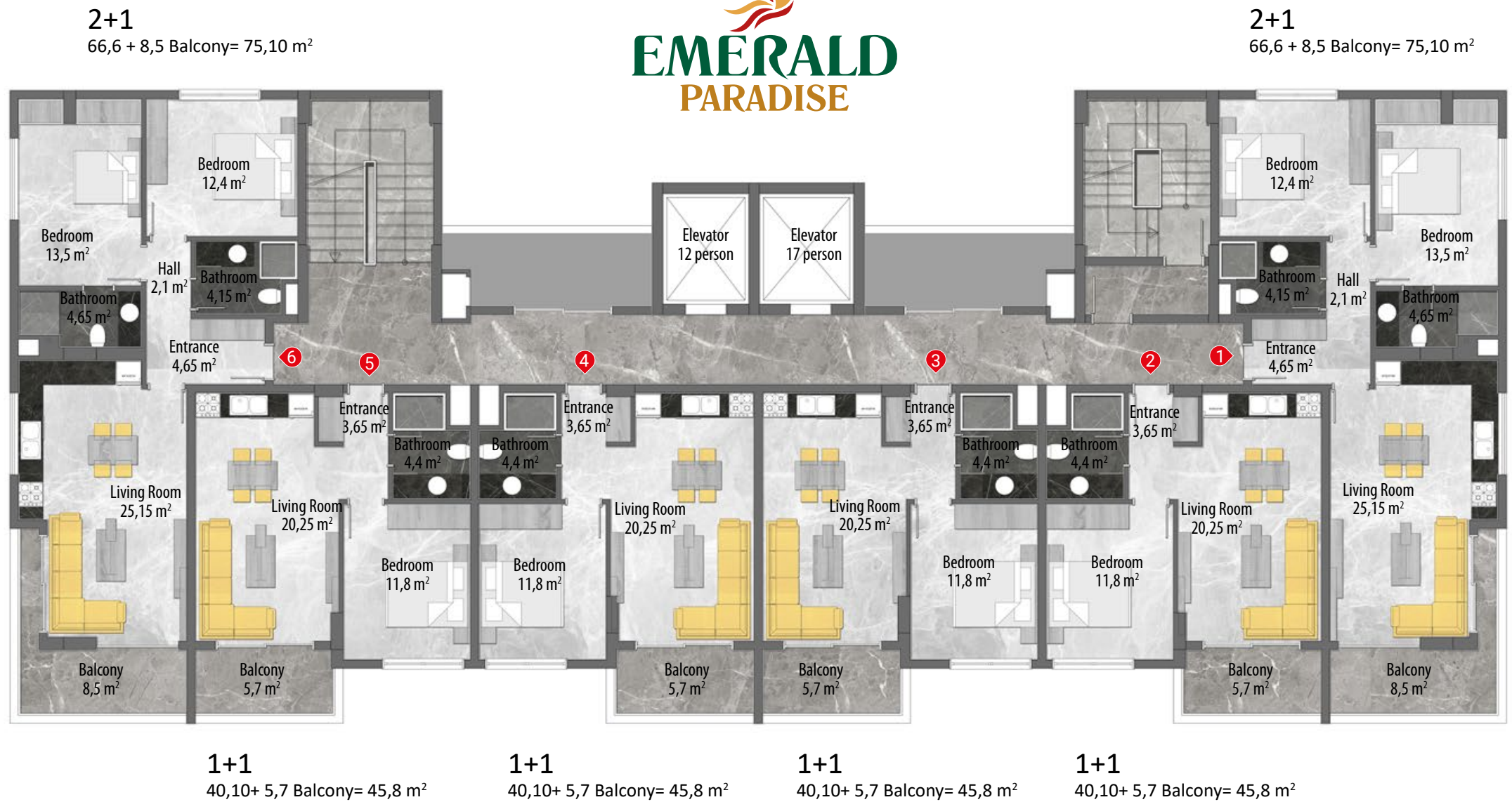
C BLOCK GROUND FLOOR PLAN



A-D BLOCK NORMAL FLOOR PLAN



B-C BLOCK 1st FLR. FLOOR PLAN



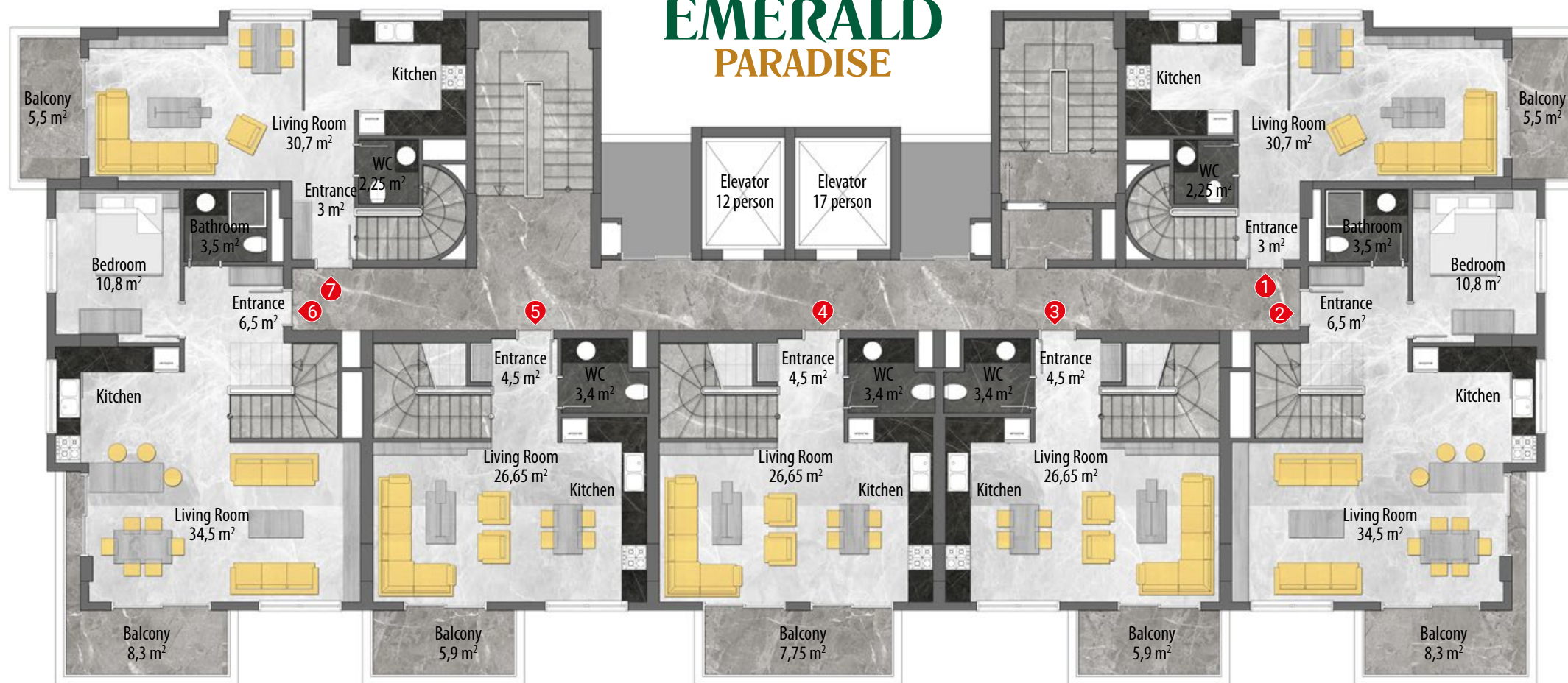
B-C BLOCK NORMAL FLOOR PLAN

2+1 Duplex

78,15 + 28,35 Balcony= 106,5 m²

2+1 Duplex

78,15 + 28,35 Balcony= 106,5 m²



3+1 Duplex

109,4 + Balcony 32,15= 141,55 m²

3+1 Duplex

103,25 + 23,25 Balcony= 126,5 m²

2+1 Duplex

74,25 + 19,25 Balcony= 93,5 m²

3+1 Duplex

103,25 + 23,25 Balcony= 126,5 m²

3+1 Duplex

109,4 + Balcony 32,15= 141,55 m²

A-D BLOCK DUPLEX FLOOR PLAN

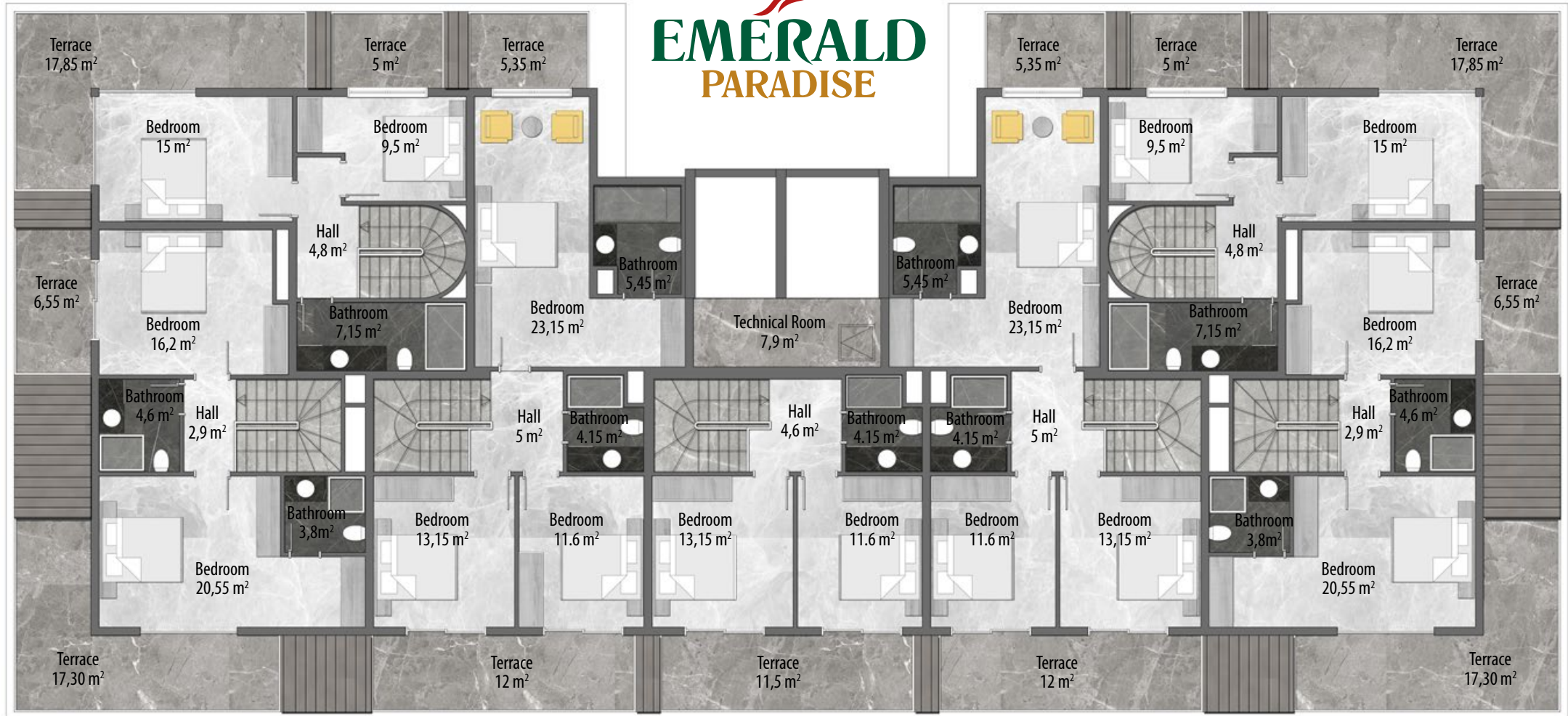
2+1 Duplex

78,15 + 28,35 Balcony= 106,5 m²



2+1 Duplex

78,15 + 28,35 Balcony= 106,5 m²



3+1 Duplex

109,4 + Balcony 32,15= 141,55 m²

3+1 Duplex

103,25 + 23,25 Balcony= 126,5 m²

2+1 Duplex

74,15 + 19,25 Balcony= 93,5 m²

3+1 Duplex

103,25 + 23,25 Balcony= 126,5 m²

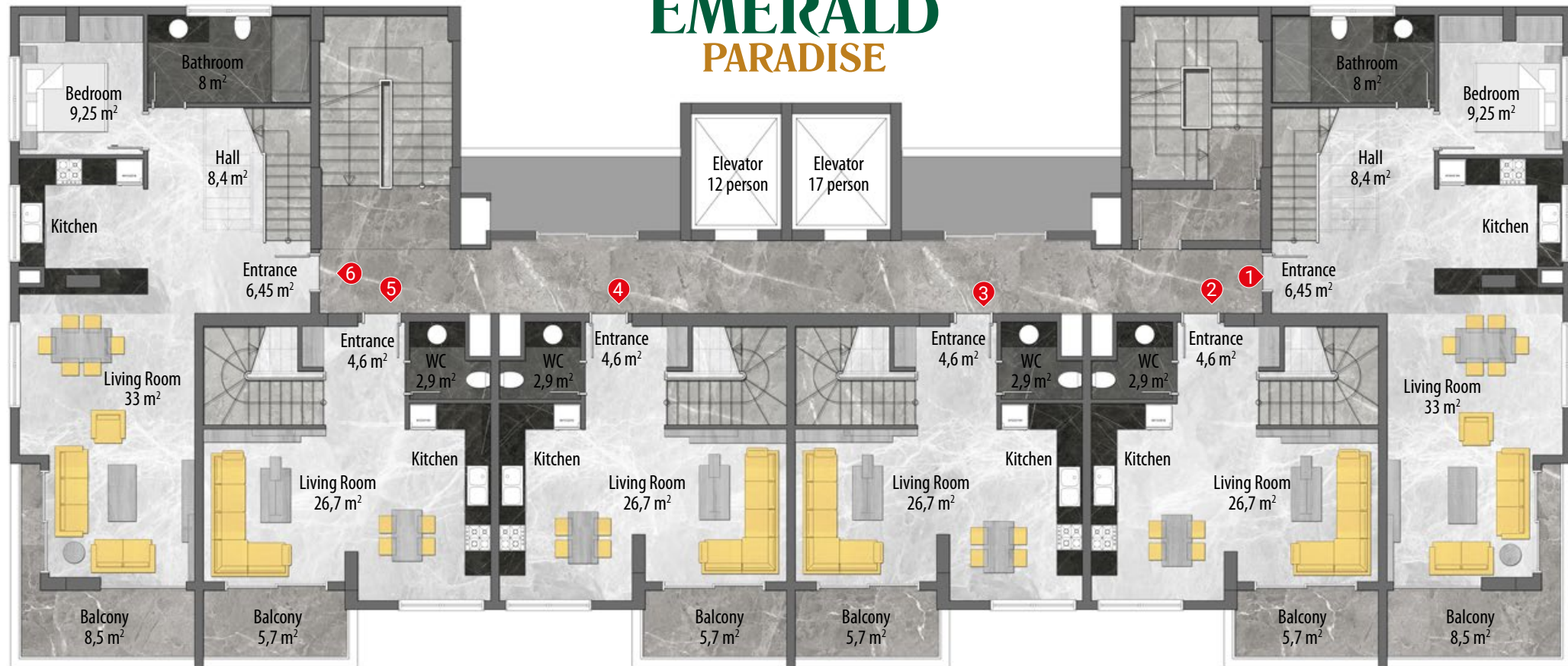
3+1 Duplex

109,4 + Balcony 32,15= 141,55 m²

A-D BLOCK ROOF FLOOR PLAN

3+1 Duplex
117,05 + 37,3 Balcony= 154,35 m²

3+1 Duplex
117,05 + 37,3 Balcony= 154,35 m²



3+1 Duplex
94,85 + 22,35 Balcony= 117,20 m²

3+1 Duplex
91,7 + 16,8 Balcony= 108,5 m²

3+1 Duplex
91,7 + 16,8 Balcony= 108,5 m²

3+1 Duplex
94,85 + 22,35 Balcony= 117,20 m²

B BLOCK DUPLEX FLOOR PLAN

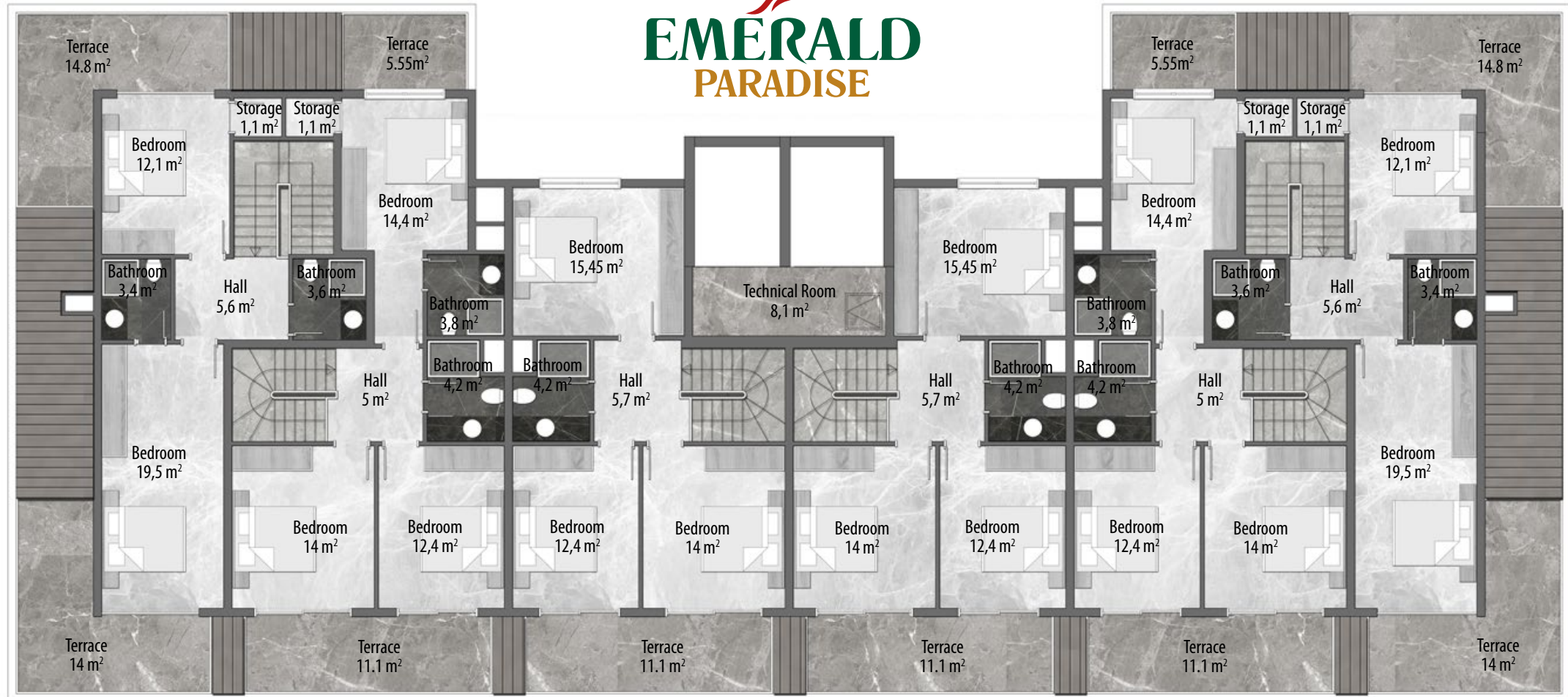
3+1 Duplex

117,05 + 37,3 Balcony= 154,35 m²



3+1 Duplex

117,05 + 37,3 Balcony= 154,35 m²



3+1 Duplex

94,85 + 22,35 Balcony= 117,20 m²

3+1 Duplex

91,7 + 16,8 Balcony= 108,5 m²

3+1 Duplex

91,7 + 16,8 Balcony= 108,5 m²

3+1 Duplex

94,85 + 22,35 Balcony= 117,20 m²

B BLOCK ROOF FLOOR PLAN

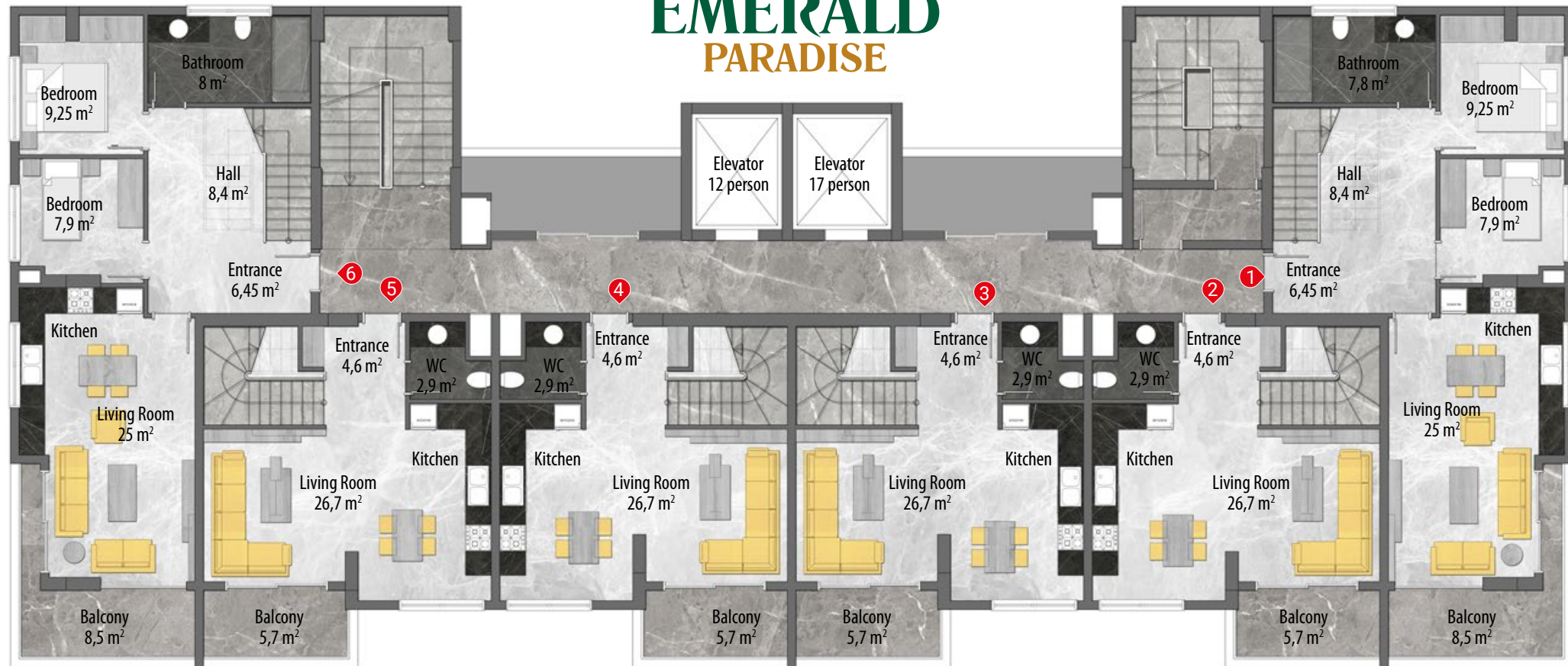
4+1 Duplex

117,05 + 37,3 Balcony= 154,35 m²



4+1 Duplex

117,05 + 37,3 Balcony= 154,35 m²



3+1 Duplex

94,85 + 22,35 Balcony= 117,20 m²

3+1 Duplex

91,7 + 16,8 Balcony= 108,5 m²

3+1 Duplex

91,7 + 16,8 Balcony= 108,5 m²

3+1 Duplex

94,85 + 22,35 Balcony= 117,20 m²

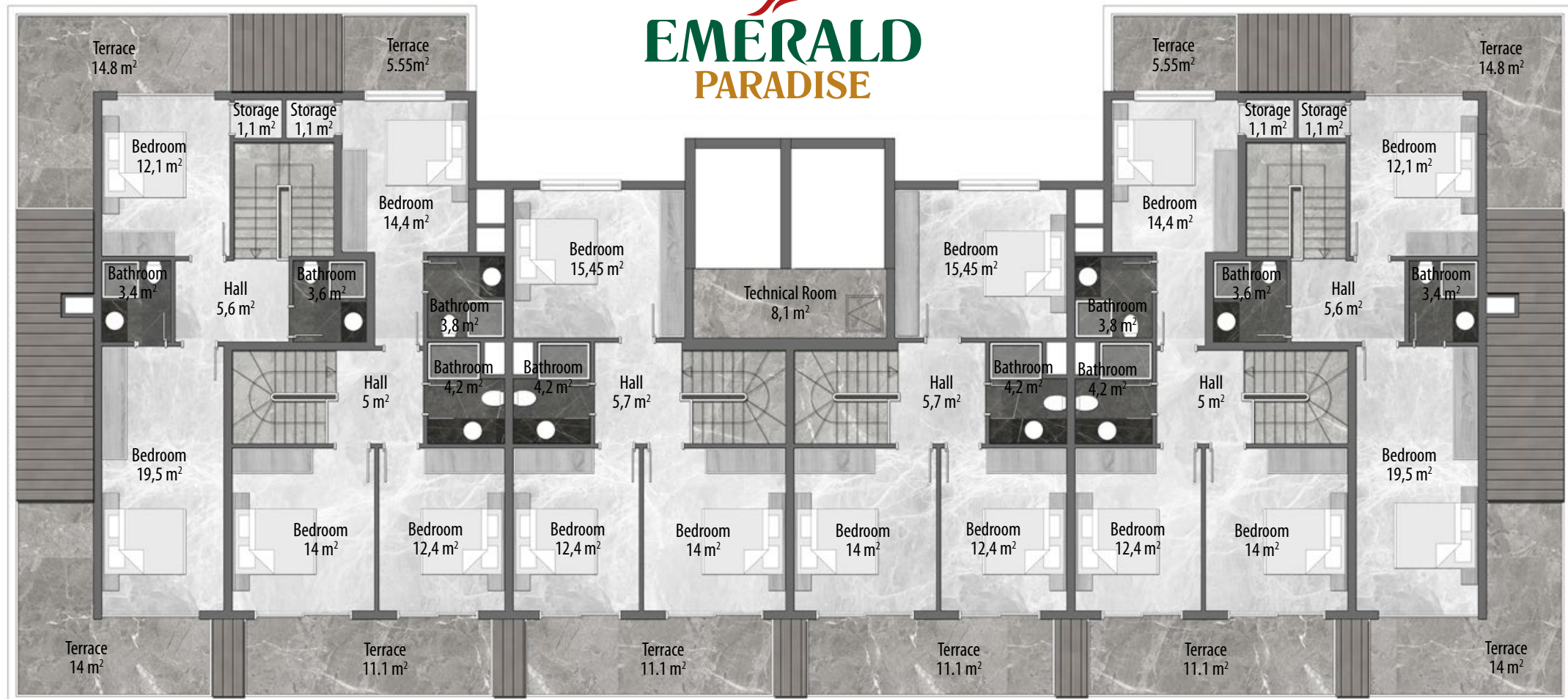
C BLOCK DUPLEX FLOOR PLAN

4+1 Duplex

117,05 + 37,3 Balcony= 154,35 m²

4+1 Duplex

117,05 + 37,3 Balcony= 154,35 m²



3+1 Duplex

94,85 + 22,35 Balcony= 117,20 m²

3+1 Duplex

91,7 + 16,8 Balcony= 108,5 m²

3+1 Duplex

91,7 + 16,8 Balcony= 108,5 m²

3+1 Duplex

94,85 + 22,35 Balcony= 117,20 m²

C BLOCK ROOF FLOOR PLAN





Toroslar Construction and Investment was founded by four partners in the year 2000 but as a construction company, Toroslar Construction and Investment, whose history goes back to the year 1985 with each partner previously owning individual business in the construction industry.

The main focus of the business now is providing residential homes. Over the years Toroslar Construction and Investment has contributed to the town planning and major constructions in Alanya and its surrounding areas.

Toroslar Construction and Investment has completed many projects including roads, bridges, sewer systems, drinking water networks, rain water piping, parks and schools in many towns. Toroslar Construction and Investment has successfully been providing homes for their European customers in and around Alanya since the year 2002.

Toroslar Construction and Investment has developed many projects and subsequently become one of the leading companies in the market. Investment and construction of residential properties is the main area of expertise for Toroslar Construction and Investment. To date, we have delivered hundreds of homes to their owners on schedule and in accordance to our original specifications. We are proud to have gained an excellent reputation, as the most trustworthy construction company in Alanya.



65 APARTMENTS
KESTEL / ALANYA / 2012



162 APARTMENTS
TOSMUR / ALANYA / 2007



100 APARTMENTS
TOSMUR / ALANYA / 2008



104 APARTMENTS
TOSMUR / ALANYA / 2011



40 APARTMENTS
AVSALLAR / ALANYA / 2016



184 APARTMENTS
AVSALLAR / ALANYA / 2014



238 APARTMENTS
AVSALLAR / ALANYA / 2014





EMERALD PARADISE



TOROSLAR
CONSTRUCTION & INVESTMENT

EN



Turkey

Discover
the potential

Şekerhane Mah. Tevfikiye Cad. Besim Ağa Sk.
Baba Apt. No: 4 07400 Alanya / TR

T. : +90 242 511 99 90 - 513 36 21

F. : + 90 242 513 03 64

www.toroslar.com.tr
info@toroslar.com.tr